



Weekly Report on the Epidemiology of COVID-19 in Ireland

Week 2

Health Protection Surveillance Centre

COVID-19 Epidemiology Team, HPSC, 18/01/2021

Dates to note:

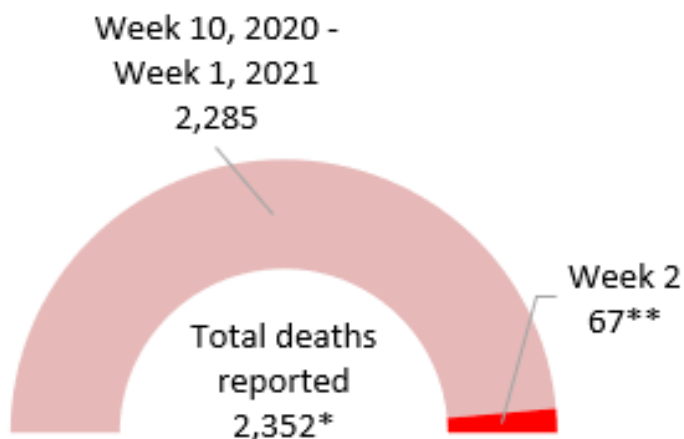
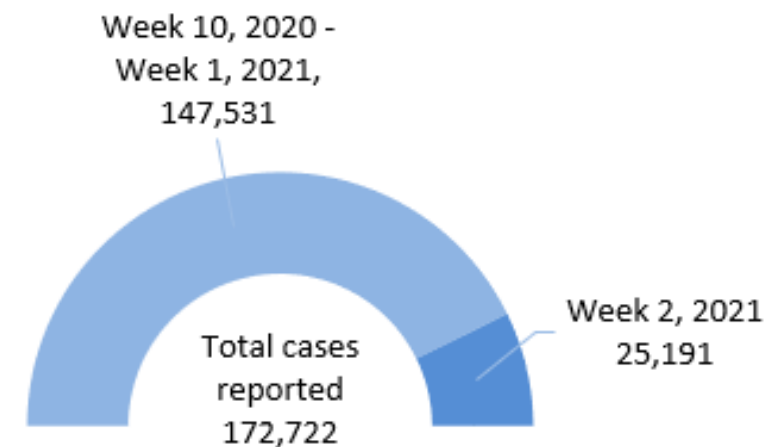
- Week 2 (10th to 16th January 2021)
- Week 48 (22nd to 28th November 2020) – the beginning of the third wave of COVID-19 infection in Ireland.
- Week 10 (1st to 7th March 2020)– The beginning of the pandemic in Ireland

Due to the large volume of COVID-19 cases in the past three weeks, the availability of surveillance data on cases are limited. Therefore some data in this report are incomplete.

Note: The epidemiological weeks in this report, run from Sunday to Saturday, please refer to appendix 1 for a complete list of epidemiological weeks with start and end dates.

Note: Data were extracted from Computerised Infectious Disease Reporting (CIDR) system on 18/01/2021 and are provisional and subject to ongoing review, validation and update. As a result, figures in this report may differ from previously published figures.

Summary characteristics of COVID-19 cases notified in Ireland



	Total (week 10, 2020-week 2, 2021)		Week 2, 2021	
	Number	Percent	Number	Percent
Total number of confirmed cases	172,722		25,191	
Incidence rate of confirmed cases per 100,000 population	3627.2		529.0	
Number of cases hospitalised	9,047	5.24	1,349***	5.36
Number of cases admitted to ICU	895	0.52	42***	0.17
Number of deaths among confirmed cases	2,352	1.36	67	0.27
Case fatality ratio (CFR %)	1.36		0.27	
Incidence rate of confirmed deaths per 100,000 population	49.39		1.41	
Number of cases associated with clusters	48,906	28.31	1,396	5.54
Number of imported cases	721	0.42	5	0.02
Number of cases in healthcare workers	18,677	10.81	2,679	10.63
Males	81,809	47.36	11,571	45.93
Females	90,842	52.59	13,590	53.95
M:F ratio	0.90		0.85	
Median (years)	38		41	
Mean age (years)	40		43	
Age range (years)	0 - 108		0 - 104	

* Total deaths reported include deaths from confirmed cases only

**The number of deaths relate only to cases notified and died in week 2. It does not include cases notified prior to week 2 and died in week 2.

***The number of cases hospitalised and admitted to ICU relate only to cases notified and admitted to hospital or ICU in week 2. It does not include cases notified prior to week 2 and admitted to hospital or ICU in week 2.

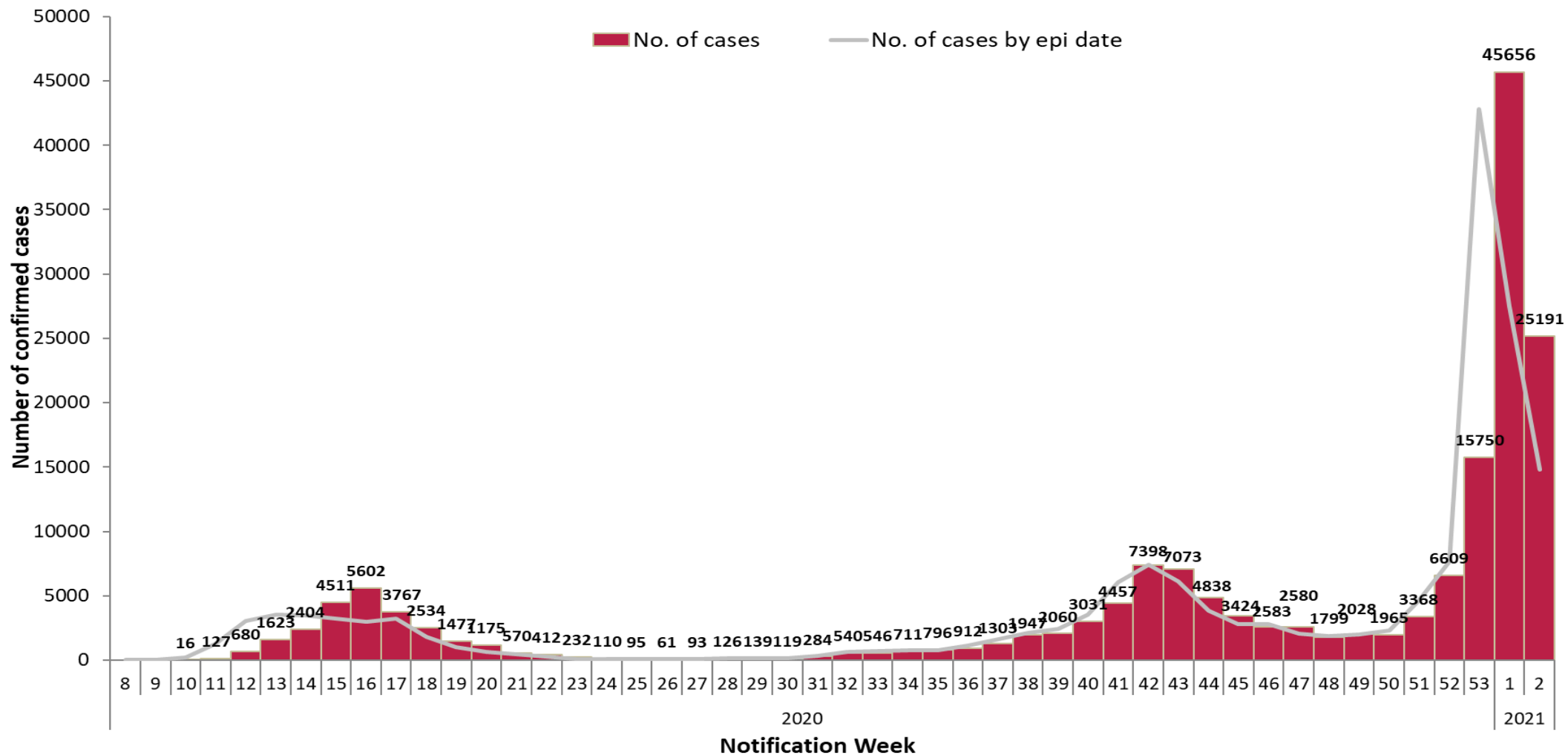


Figure 1: Number of confirmed COVID-19 cases by notification week and epidemiological week in Ireland between week 8, 2020 and week 2, 2021.

At the end of Week 53 a significant number of cases were awaiting processing, as a result the number of cases reported in Week 53 is reduced and the number of cases reported in Week 1 is inflated.

Between week 15 and 16 (05/04/2020 – 19/04/2020) the daily number of COVID-19 events notified in Ireland is inflated due to batch reporting of cases with specimen dates between from 19/03/2020 – 01/04/2020 in addition to real-time reporting of cases with contemporaneous specimen dates

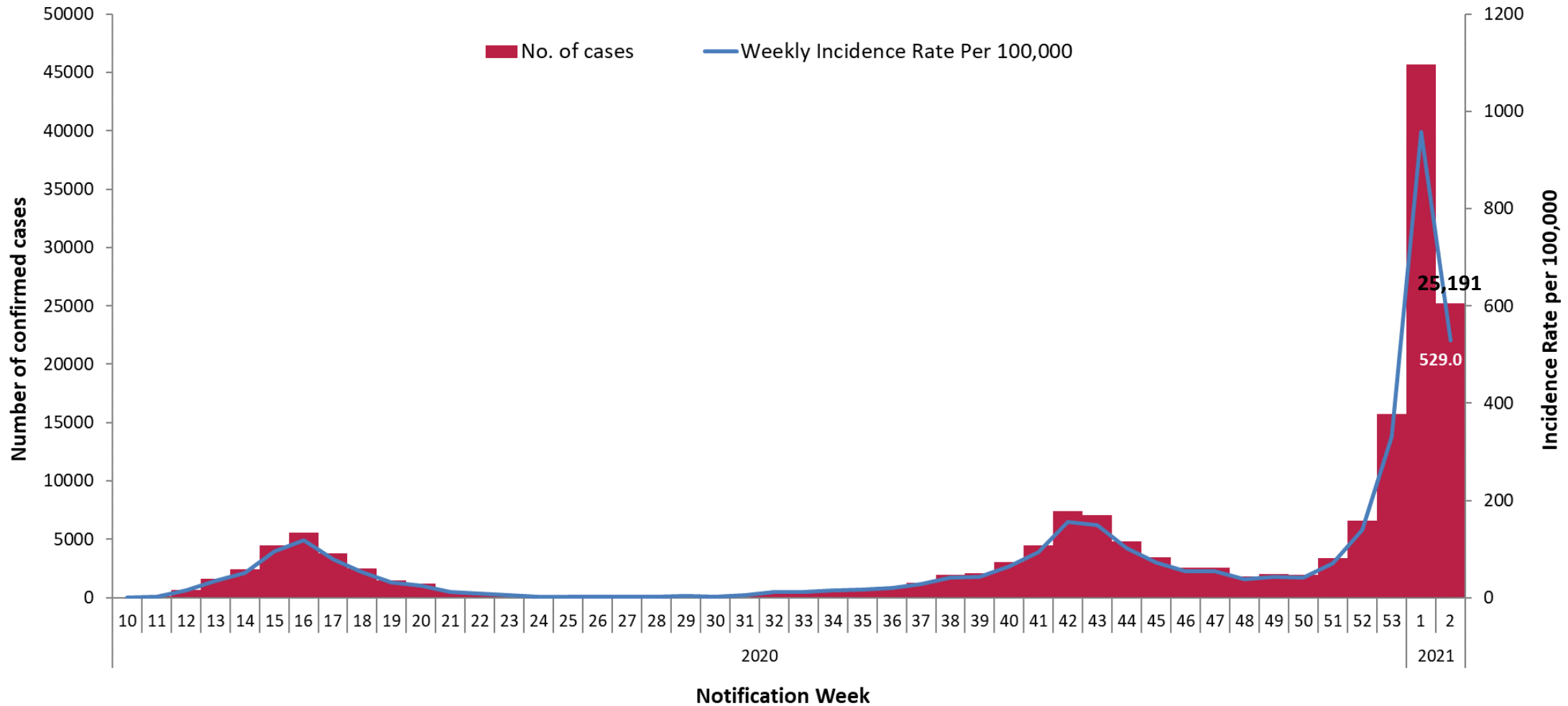


Figure 2: Number of confirmed COVID-19 cases by notification week and weekly incidence rate per 100,000 population in Ireland between week 10, 2020 and week 2, 2021.

At the end of Week 53 a significant number of cases were awaiting processing, as a result the number of cases reported in Week 53 is reduced and the number of cases reported in Week 1 is inflated.

population data were taken from Census 2016

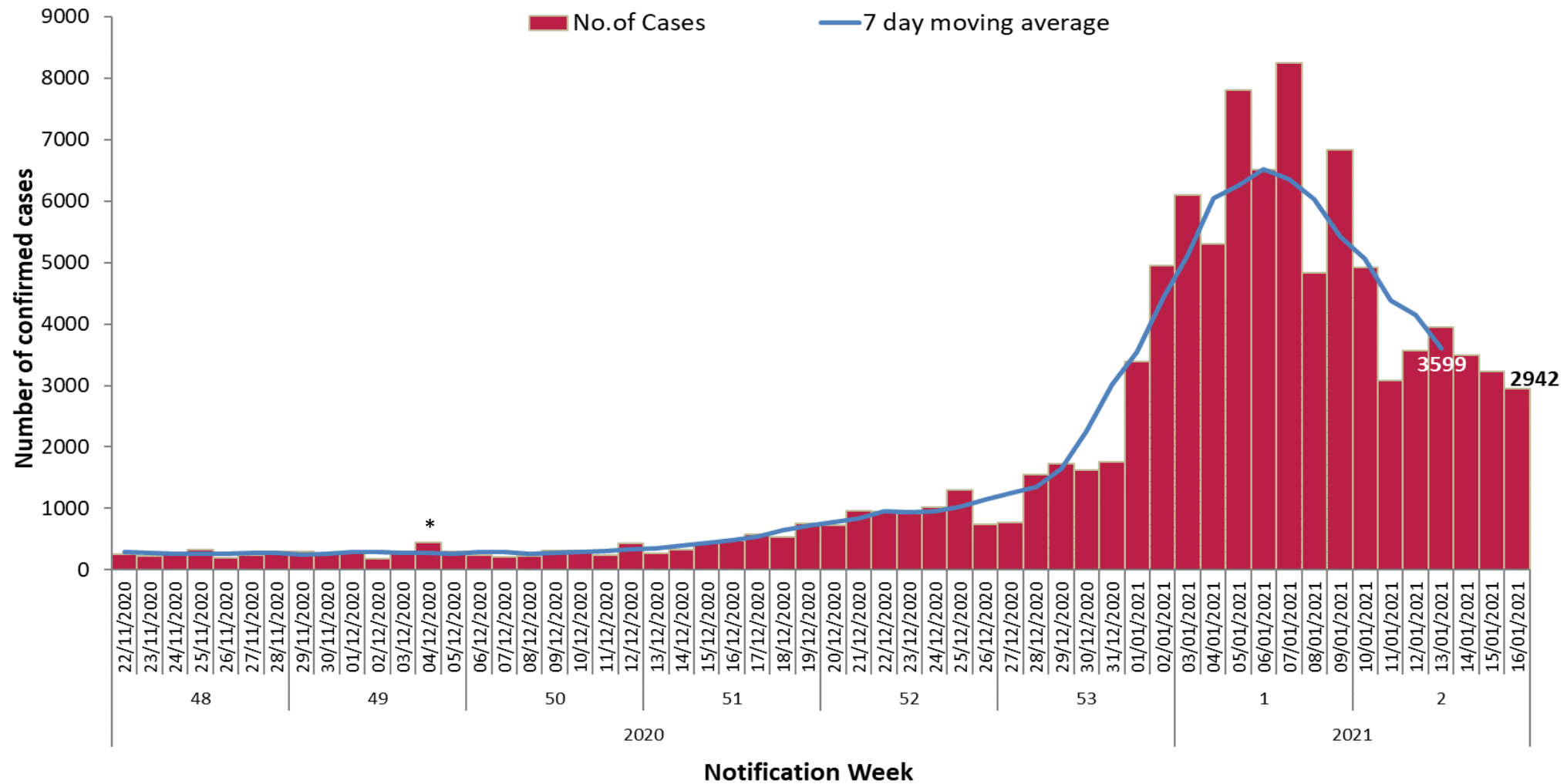


Figure 3: Number of confirmed COVID-19 cases , and 7-day moving average, by notification date in Ireland between week 48, 2020 and week 2, 2021.

At the end of Week 53 a significant number of cases were awaiting processing, as a result the number of cases reported in Week 53 is reduced and the number of cases reported in Week 1 is inflated.

*on the 04/12/2020 the number of COVID-19 cases notified in Ireland is inflated due to the inclusion of cases notified earlier in week 49 which were batch reported following an IT issue on 02/12/2020

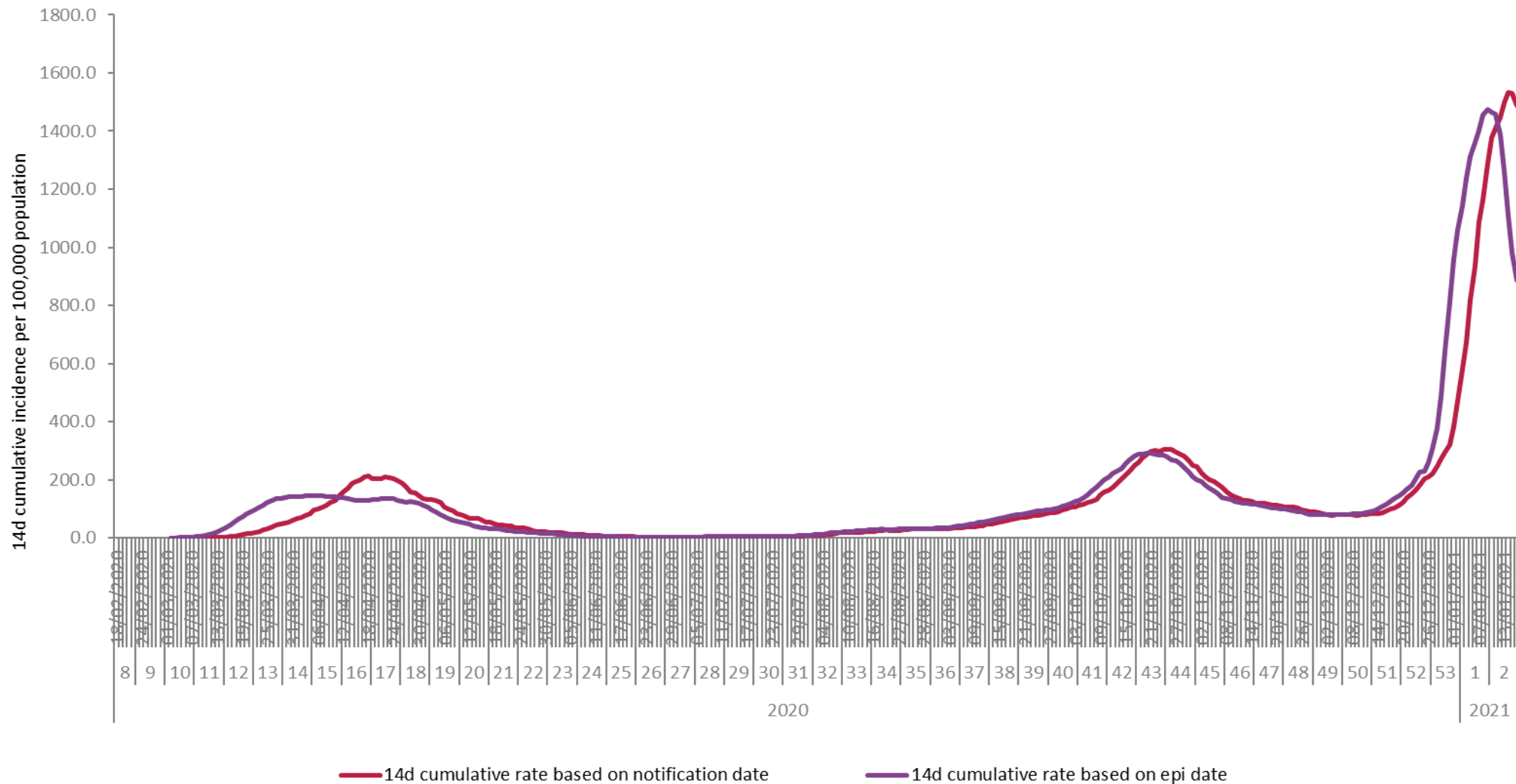


Figure 4a: Cumulative 14-day incidence rate of confirmed COVID-19 cases per 100,000 population notified in Ireland by notification and epidemiological date* between week 8, 2020 and week 2, 2021.

*Epidemiological date: is based on the earliest of dates available on the case and taken from date of onset of symptoms, date of diagnosis, laboratory specimen collection date, laboratory received date, laboratory reported date or event creation date/notification date on CIDR. By using this date rather than event creation/notification date, adjusts for any delays in testing/notification. Please note that the trend in cases by epidemiological date will show a lag for recent days and therefore should be interpreted with caution.

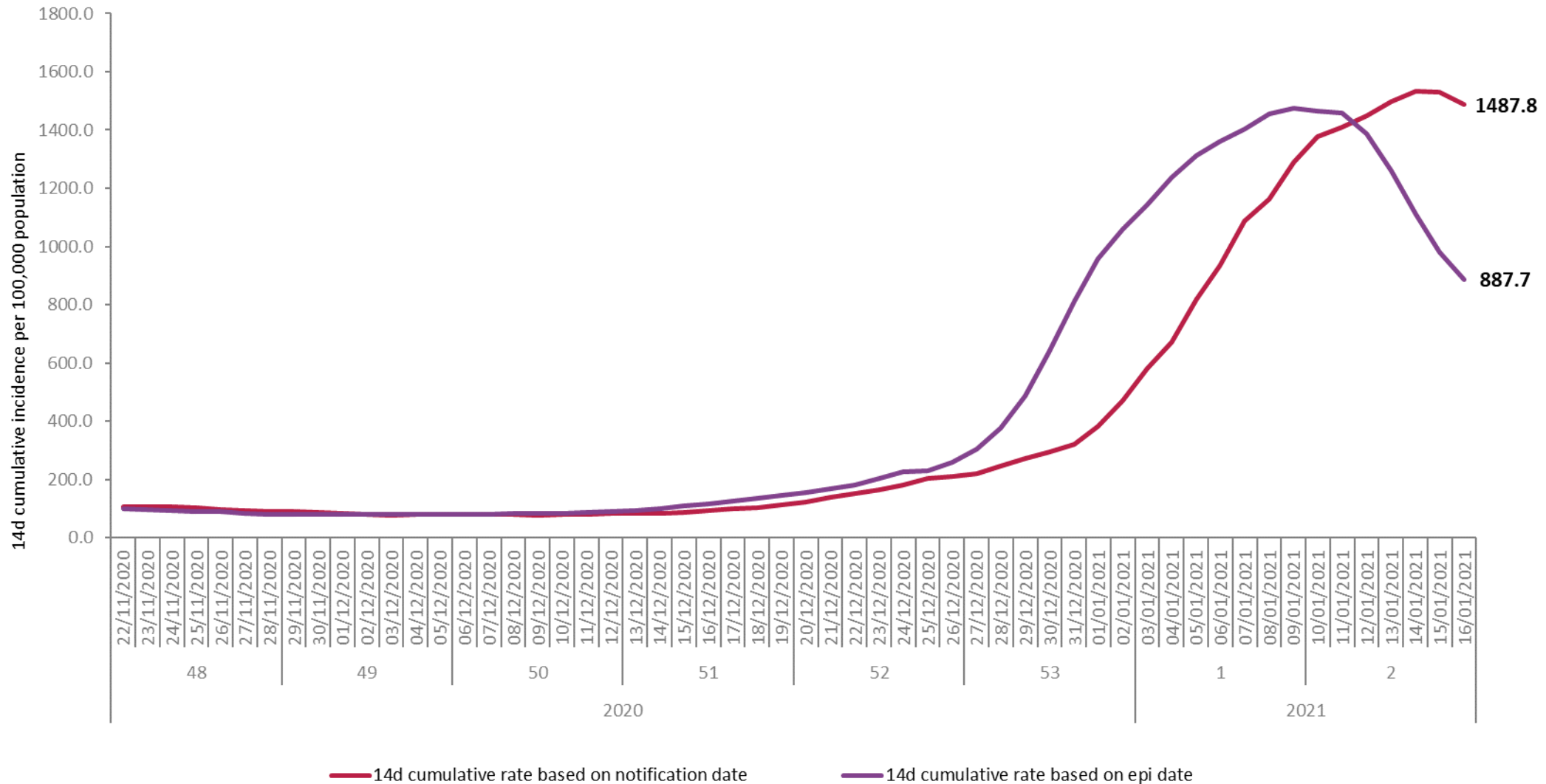


Figure 4b: Cumulative 14-day incidence rate of confirmed COVID-19 cases per 100,000 population notified in Ireland by notification and epidemiological date between week 48, 2020 and week 2, 2021.

Characteristic		Week 2	Percent
Total number of confirmed cases		25,191	100
Sex	Male:Female ratio	0.9	
	Male	11,571	45.9
	Female	13,590	53.9
	Unknown	30	0.1
Age	Mean age (years)	41	
	Median age (years)	43	
	Age range (years)	0 - 104	
	0-4 yrs	507	2.0
	5-12 yrs	801	3.2
	13-18 yrs	1,403	5.6
	19-24 yrs	2,743	10.9
	25-34 yrs	4,306	17.1
	35-44 yrs	4,168	16.5
	45-54 yrs	4,146	16.5
	55-64 yrs	3,247	12.9
	65-74 yrs	1,597	6.3
	75-84 yrs	1,288	5.1
	85+ yrs	955	3.8
		Unknown	30
Underlying clinical conditions	Yes	1,048	4.2
	No	18,492	73.4
	Unknown	5,651	22.4
Symptomatic*	Yes	16,667	66.2
	No	2,577	10.2
	Unknown	5,947	23.6

Table 1: Characteristics of confirmed COVID-19 cases notified in Ireland during week 2, 2021.

*Symptom status is recorded at the time of test and is not updated; therefore, a proportion of the asymptomatic cases may subsequently develop symptoms however this will not be captured in the data.

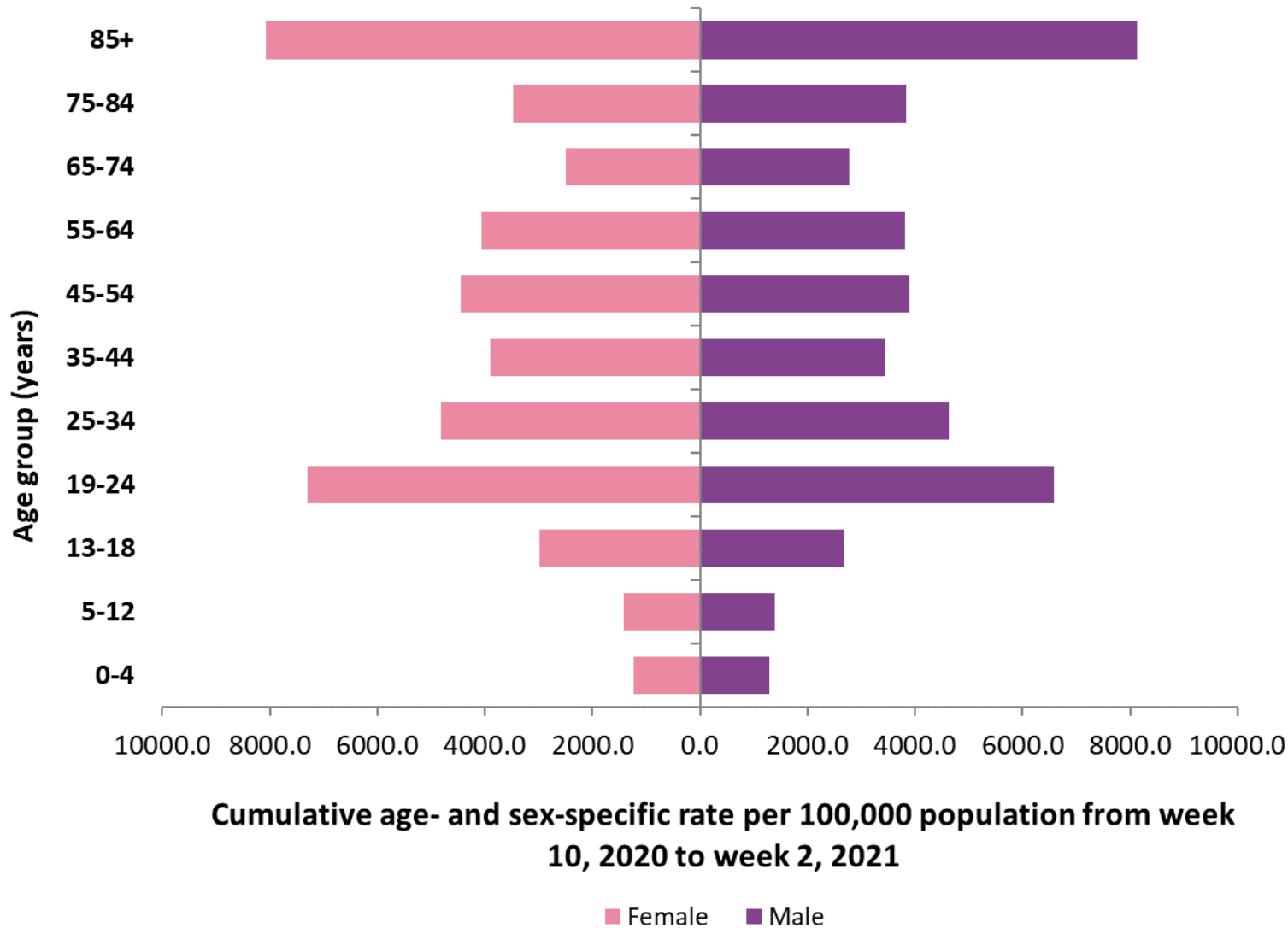


Figure 5a: Cumulative age- and sex-specific incidence rates of confirmed COVID-19 cases per 100,000 population notified in Ireland between week 10, 2020 and week 2, 2021.

(excluding 70 cases for whom age is unknown and 65 cases for whom sex is unknown and 1 cases for whom both are unknown)

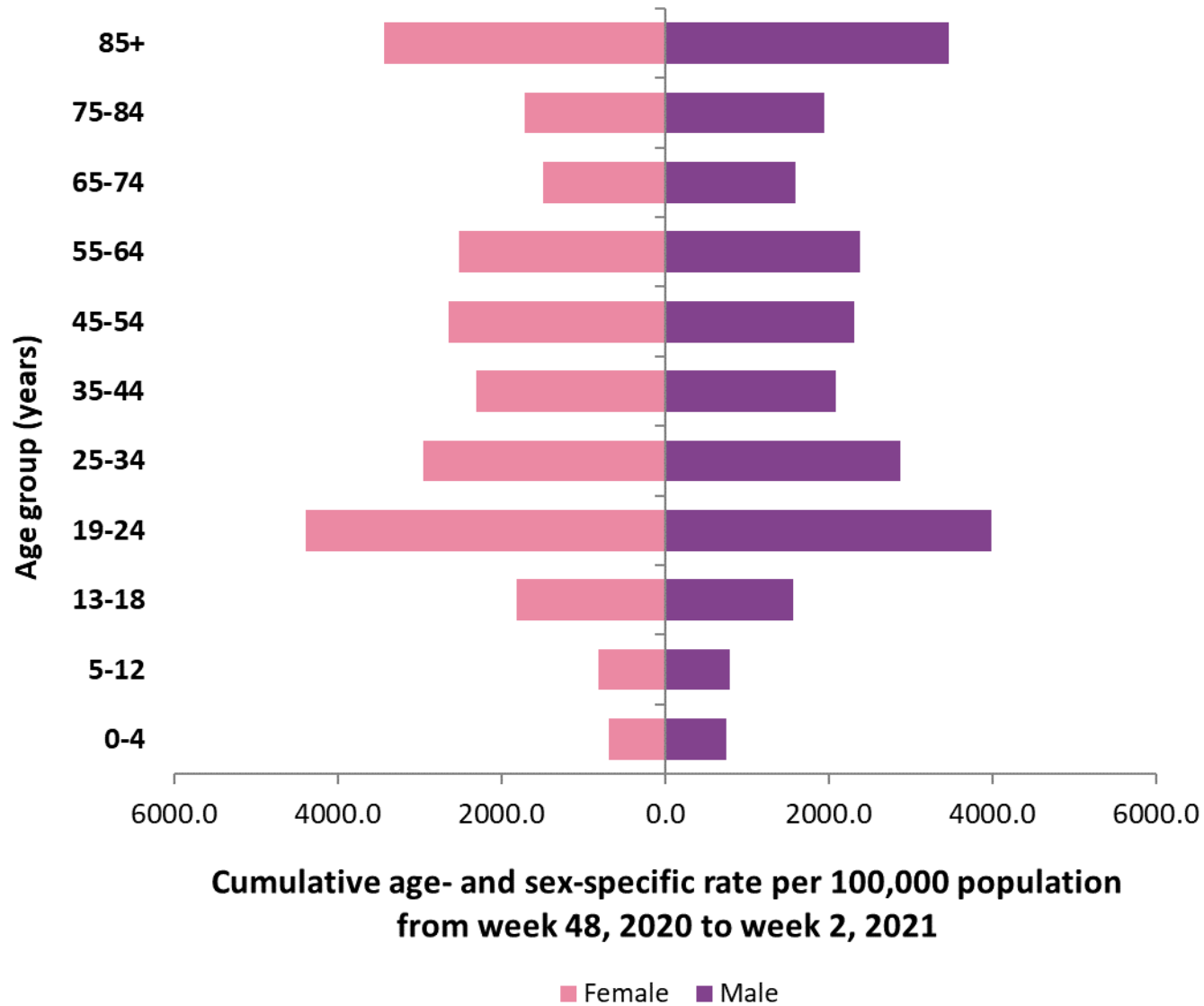


Figure 5b: Cumulative age- and sex-specific incidence rates of confirmed COVID-19 cases per 100,000 population notified in Ireland between week 48, 2020 and week 2, 2021.

(excluding 57 cases for whom age is unknown, and 40 cases for whom sex is unknown)

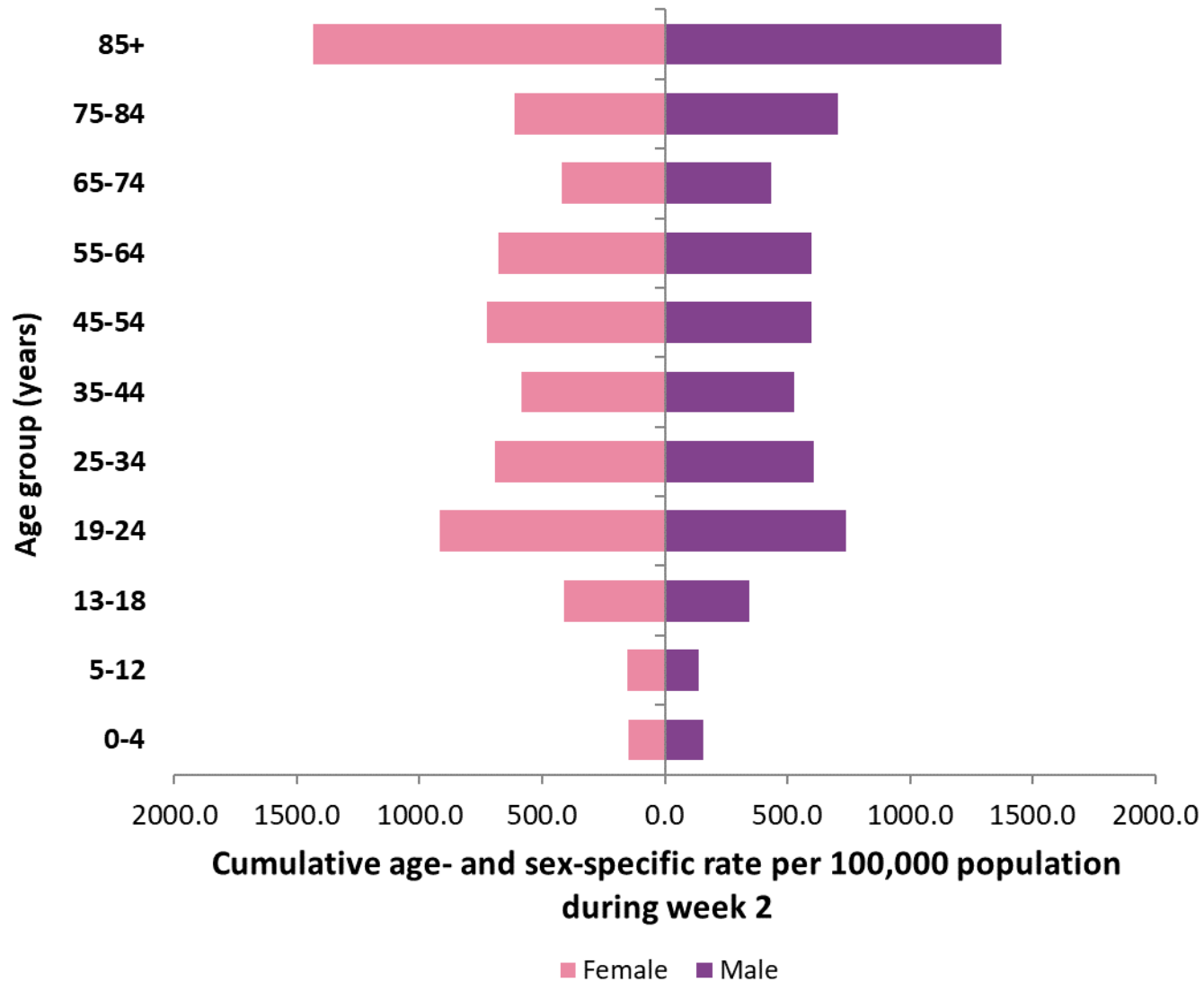


Figure 5c: Cumulative age- and sex-specific incidence rates of confirmed COVID-19 cases per 100,000 population notified in Ireland during week 2, 2021.

(excluding 30 cases for whom age is unknown, and 30 cases for whom sex is unknown)

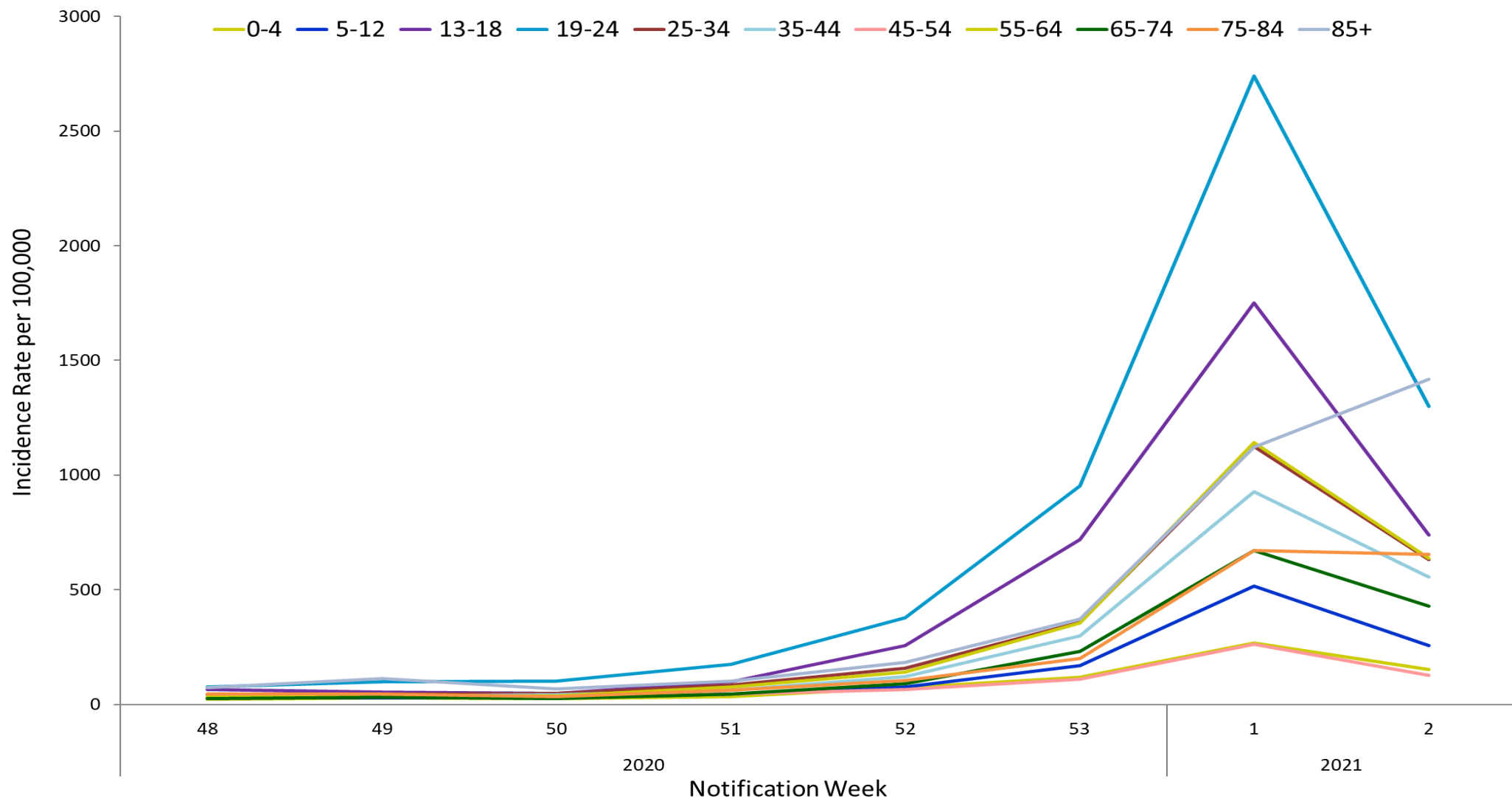


Figure 6a: Weekly age-specific incidence rates of confirmed COVID-19 cases per 100,000 population in Ireland between week 48, 2020 and week 2, 2021.

At the end of Week 53 a significant number of cases were awaiting processing, as a result the incidence rates reported in Week 53 are reduced and the incidence rates reported in Week 1 are inflated.

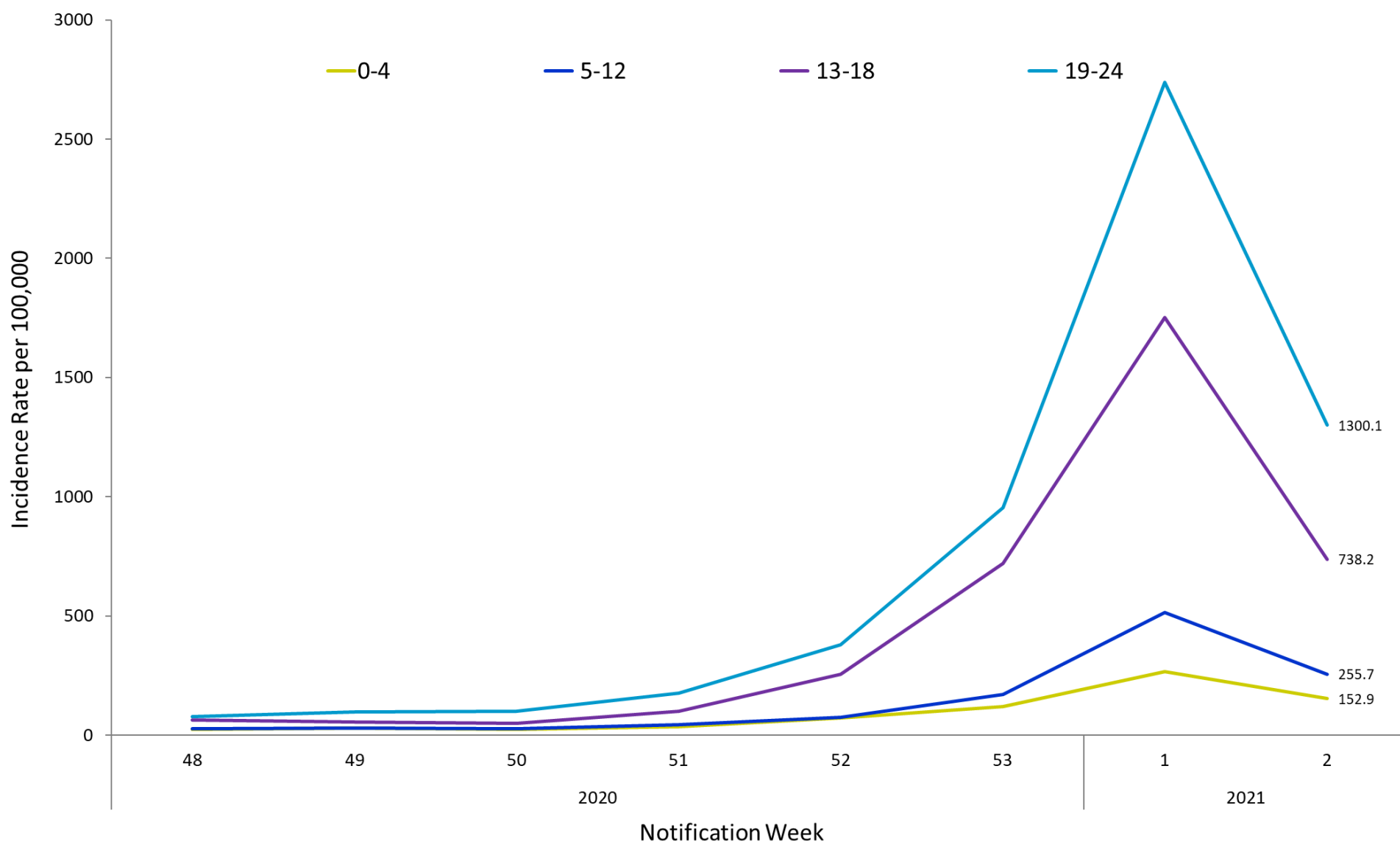


Figure 6b: Weekly age-specific incidence rates of confirmed COVID-19 cases per 100,000 population in Ireland between week 48, 2020 and week 2, 2021.

At the end of Week 53 a significant number of cases were awaiting processing, as a result the incidence rates reported in Week 53 are reduced and the incidence rates reported in Week 1 are inflated

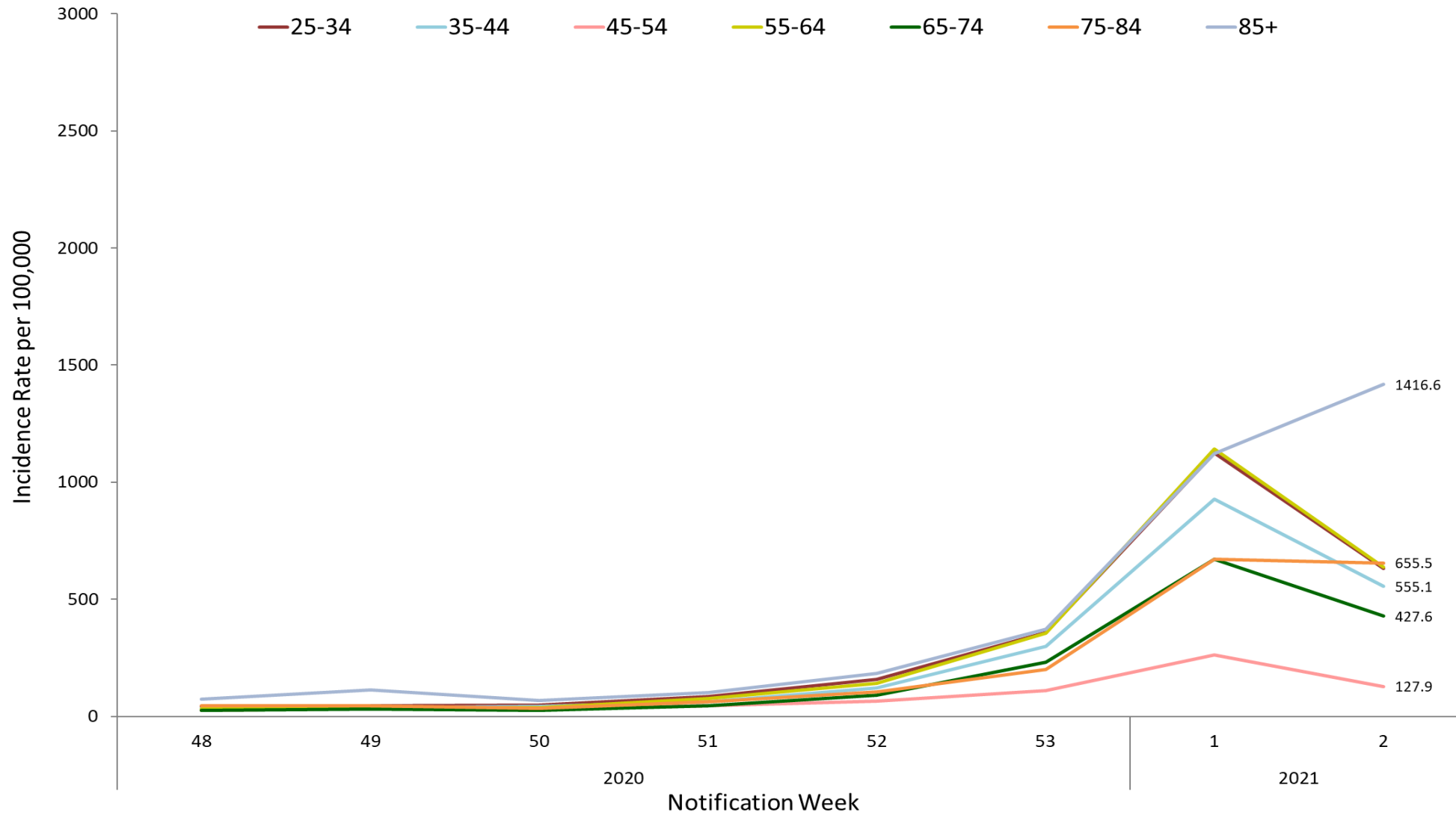


Figure 6c: Weekly age-specific incidence rates of confirmed COVID-19 cases per 100,000 population in Ireland between week 48, 2020 and week 2, 2021.

At the end of Week 53 a significant number of cases were awaiting processing, as a result the incidence rates reported in Week 53 are reduced and the incidence rates reported in Week 1 are inflated

		Age Range											
		0-4	5-12	13-18	19-24	25-34	35-44	45-54	55-64	65-74	75-84	85+	National
2020	Notification Week 48	23.2	27.7	64.3	77.6	42.3	33.2	26.0	30.5	24.1	44.8	74.0	37.8
	49	28.7	29.2	54.1	97.5	45.6	37.1	33.4	35.6	30.3	46.3	114.0	42.6
	50	24.7	27.7	49.2	100.2	47.2	41.2	31.9	37.3	24.9	34.6	68.1	41.3
	51	35.3	44.1	99.3	175.1	85.8	63.2	45.0	75.3	44.2	62.6	100.7	70.7
	52	72.1	75.1	255.9	378.9	159.1	122.4	65.7	141.1	89.2	103.3	182.1	138.8
	53	118.2	169.3	719.6	952.9	358.2	298.7	110.1	353.9	232.1	201.5	371.5	330.8
2021	Notification Week 1	266.7	514.7	1751.9	2738.8	1123.6	926.4	262.8	1140.8	672.0	669.7	1120.6	958.8
	2	152.9	255.7	738.2	1300.1	632.1	555.1	127.9	638.0	427.6	655.5	1416.6	529.0

Figure 7: Heat map of weekly age-specific incidence rates of confirmed COVID-19 cases per 100,000 population in Ireland between week 48, 2020 and week 2, 2021.

At the end of Week 53 a significant number of cases were awaiting processing, as a result the incidence rates reported in Week 53 are reduced and the incidence rates reported in Week 1 are inflated

County	Cases		M:F ratio	Median age	Incidence Rate per 100,000
	N	%		(years)	
Monaghan	617	2.4	0.9	41	1005.1
Mayo	1268	5.0	0.8	46	971.6
Louth	1044	4.1	0.8	46	810.0
Waterford	864	3.4	0.9	47	743.7
Limerick	1298	5.2	0.9	41	666.0
Galway	1642	6.5	0.9	38	636.3
Wexford	940	3.7	0.9	41	627.8
Carlow	323	1.3	1.1	37	567.3
Dublin	7598	30.2	0.8	38	563.9
Donegal	847	3.4	0.8	47	532.1
Cork	2862	11.4	0.8	43	527.2
Roscommon	325	1.3	0.8	40	503.5
Clare	566	2.2	0.8	46	476.4
Meath	892	3.5	0.9	42	457.3
Cavan	341	1.4	1.0	46	447.6
Laois	371	1.5	0.9	40	438.0
Offaly	314	1.2	0.8	44	402.8
Kildare	876	3.5	0.8	42	393.7
Tipperary	566	2.2	1.0	42	354.7
Wicklow	436	1.7	0.8	43	306.1
Kilkenny	289	1.1	0.9	44	291.2
Kerry	418	1.7	0.9	44	283.0
Westmeath	236	0.9	1.0	39	265.9
Sligo	139	0.6	0.9	42	212.1
Longford	71	0.3	1.2	41	173.7
Leitrim	48	0.2	0.7	48.5	149.8

Table 2: Characteristics of confirmed COVID-19 cases by county notified in Ireland, during week 2, 2021.

		Carlow	Cavan	Clare	Cork	Donegal	Dublin	Galway	Kerry	Kildare	Kilkenny	Laois	Leitrim	Limerick	Longford	Louth	Mayo	Meath	Monaghan	Offaly	Roscommon	Sligo	Tipperary	Waterford	Westmeath	Wexford	Wicklow	National
2020	Notification Week 48	31.6	19.7	14.3	24.5	111.2	43.7	20.2	21.0	21.1	83.6	29.5	3.1	60.5	44.0	75.3	36.8	24.1	31.0	21.8	23.2	21.4	44.5	42.2	13.5	7.3	52.7	37.8
	49	73.8	40.7	19.4	13.4	112.4	50.9	31.0	12.2	27.4	85.7	26.0	12.5	80.6	46.5	83.0	43.7	25.1	97.7	37.2	24.8	15.3	44.5	21.5	10.1	12.0	68.1	42.6
	50	84.3	68.3	12.6	12.9	107.4	42.2	28.7	8.1	29.7	112.9	69.7	12.5	51.3	97.9	93.1	65.9	34.4	39.1	30.8	20.1	33.6	38.2	45.6	16.9	24.7	35.8	41.3
	51	110.7	106.3	14.3	39.1	154.5	82.2	23.3	99.5	54.8	84.7	105.1	12.5	99.5	46.5	142.8	50.6	73.3	86.3	34.6	21.7	59.5	27.0	58.5	28.2	143.6	32.3	70.7
	52	114.2	89.3	105.2	123.4	271.4	166.8	99.6	150.3	113.3	183.4	85.0	56.2	227.8	41.6	166.8	79.7	105.1	202.0	48.7	66.6	132.8	72.1	100.7	75.5	205.0	81.4	138.8
	53	272.3	506.7	396.4	282.4	555.3	277.1	277.5	299.2	164.5	307.4	317.6	287.1	613.7	347.4	774.3	498.1	369.7	858.5	319.4	311.4	497.4	196.2	235.8	239.9	281.9	116.6	330.8
2021	Notification Week 1	1099.6	978.0	993.1	1055.7	853.1	1197.4	457.6	762.3	807.2	855.6	526.6	424.4	1225.3	555.4	1427.6	669.7	768.5	1666.5	575.9	413.7	631.7	612.3	1315.2	448.3	1177.5	492.9	958.8
	2	567.3	447.6	476.4	527.2	532.1	563.9	636.3	283.0	393.7	291.2	438.0	149.8	666.0	173.7	810.0	971.6	457.3	1005.1	402.8	503.5	212.1	354.7	743.7	265.9	627.8	306.1	529.0

Figure 8: Heat map of weekly incidence rates of confirmed COVID-19 cases per 100,000 population, by county, notified in Ireland between week 48, 2020 and week 2, 2021.

At the end of Week 53 a significant number of cases were awaiting processing, as a result the incidence rates reported in Week 53 are reduced and the incidence rates reported in Week 1 are inflated

		HSE-E	HSE-M	HSE-MW	HSE-NE	HSE-NW	HSE-SE	HSE-S	HSE-W	National
2020	Notification Week 48	41.5	24.6	40.5	38.7	74.4	41.3	23.7	25.4	37.8
	49	49.3	27.4	51.2	53.7	74.8	43.7	13.2	33.8	42.6
	50	40.1	47.2	36.6	57.1	76.4	55.8	11.9	38.2	41.3
	51	74.5	54.7	59.7	100.1	112.0	89.0	52.0	30.9	70.7
	52	152.7	66.7	169.4	133.0	208.2	137.6	129.2	89.2	138.8
	53	249.1	305.2	482.9	571.6	505.2	246.5	286.0	345.8	330.8
2021	Notification Week 1	1088.1	525.5	1021.6	1107.9	742.4	1050.7	992.9	512.5	958.8
	2	520.4	339.7	557.7	628.3	401.6	528.7	475.0	714.0	529.0

Figure 9: Weekly Incidence rates of confirmed COVID-19 cases per 100,000 population, by HSE area, notified in Ireland between week 48, 2020 and week 2, 2021.

At the end of Week 53 a significant number of cases were awaiting processing, as a result the incidence rates reported in Week 53 are reduced and the incidence rates reported in Week 1 are inflated

		CHO1	CHO2	CHO3	CHO4	CHO5	CHO6	CHO7	CHO8	CHO9
2020	Notification Week 48	57.8	25.4	40.5	23.7	41.3	55.3	31.8	34.9	44.1
	49	72.6	33.8	51.2	13.2	43.7	66.3	34.1	38.1	56.2
	50	69.8	38.2	36.6	11.9	55.8	47.8	31.4	52.5	45.2
	51	108.1	30.9	59.7	52.0	89.0	74.4	51.4	78.6	100.7
	52	186.3	89.2	169.4	129.2	137.6	179.0	129.6	99.3	162.7
	53	566.1	345.8	482.9	286.0	246.5	261.0	189.3	421.6	309.8
2021	Notification Week 1	938.5	512.5	1021.6	992.9	1050.7	1024.9	975.0	787.8	1255.9
	2	509.1	714.0	557.7	475.0	528.7	476.6	452.9	473.0	624.2

Figure 10: Weekly Incidence rates of confirmed COVID-19 cases by CHO notified in Ireland between week 48, 2020 and week 2, 2021.

At the end of Week 53 a significant number of cases were awaiting processing, as a result the incidence rates reported in Week 53 are reduced and the incidence rates reported in Week 1 are inflated

		CCA1	CCA2	CCA3	CCA4	CCA5	CCA6	CCA7	CCA8
		Dublin South	Dublin South East	Dublin South City	Dublin South West	Dublin West	Dublin North West	Dublin North Central	Dublin North
2020	48	38.2	69.5	34.0	44.1	35.4	43.8	64.0	32.4
	49	41.9	80.8	32.7	38.5	44.4	60.7	69.2	44.8
	50	29.4	75.2	30.7	26.7	42.5	34.7	62.1	43.6
	51	48.5	142.3	46.7	44.7	62.4	106.0	133.3	77.2
	52	127.9	321.7	119.4	134.9	171.9	173.9	241.3	106.9
	53	197.7	461.6	218.1	206.3	198.9	327.5	416.0	232.3
2021	1	798.1	1746.1	953.7	1145.4	1165.2	1442.1	1452.3	989.8
	2	319.7	782.5	390.8	521.4	573.6	731.7	705.1	490.1

Figure 11: Weekly Incidence rates of confirmed COVID-19 cases by Dublin Local Health Offices (LHOs) notified in Ireland between week 48, 2020 and week 2, 2021.

At the end of Week 53 a significant number of cases were awaiting processing, as a result the incidence rates reported in Week 53 are reduced and the incidence rates reported in Week 1 are inflated

Note: Local health offices (LHOs) came into operation on 1st September 2005, replacing Community Care Areas (CCAs). LHO population denominators are used in this report rather than CCA population denominators. The LHO rates were calculated using Census 2016 LHO denominator data extracted from the HSE Health Atlas and are not a direct match to the corresponding CCAs.

Laboratory data for COVID-19 cases

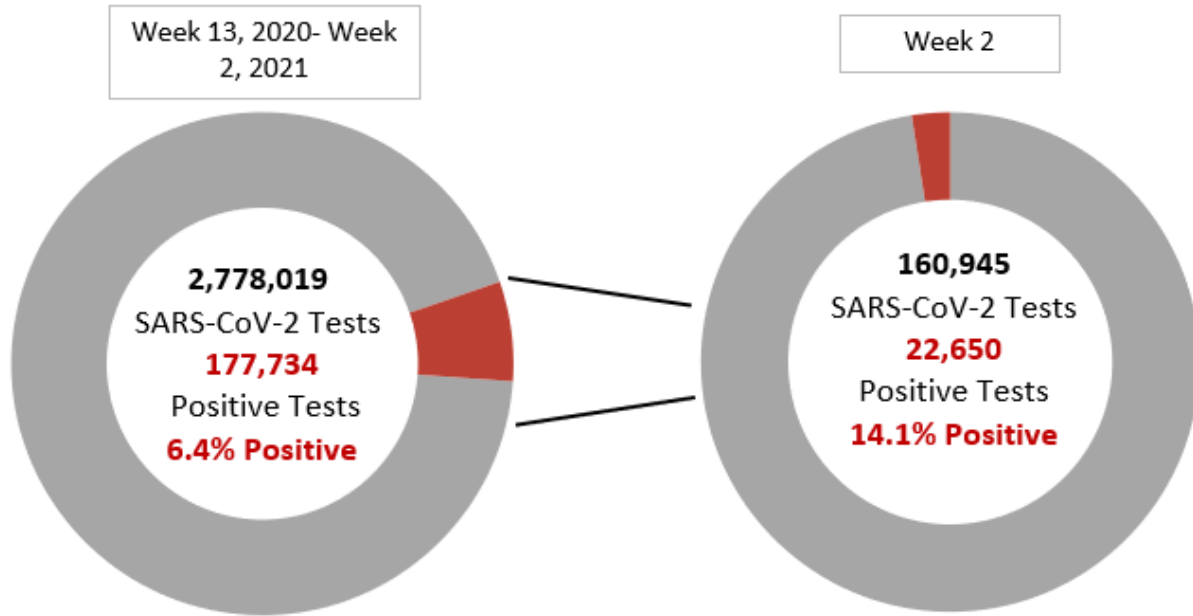


Figure 12a: Number of SARS-CoV-2 tests and positive tests* in Ireland between week 13, 2020 and week 2, 2021.

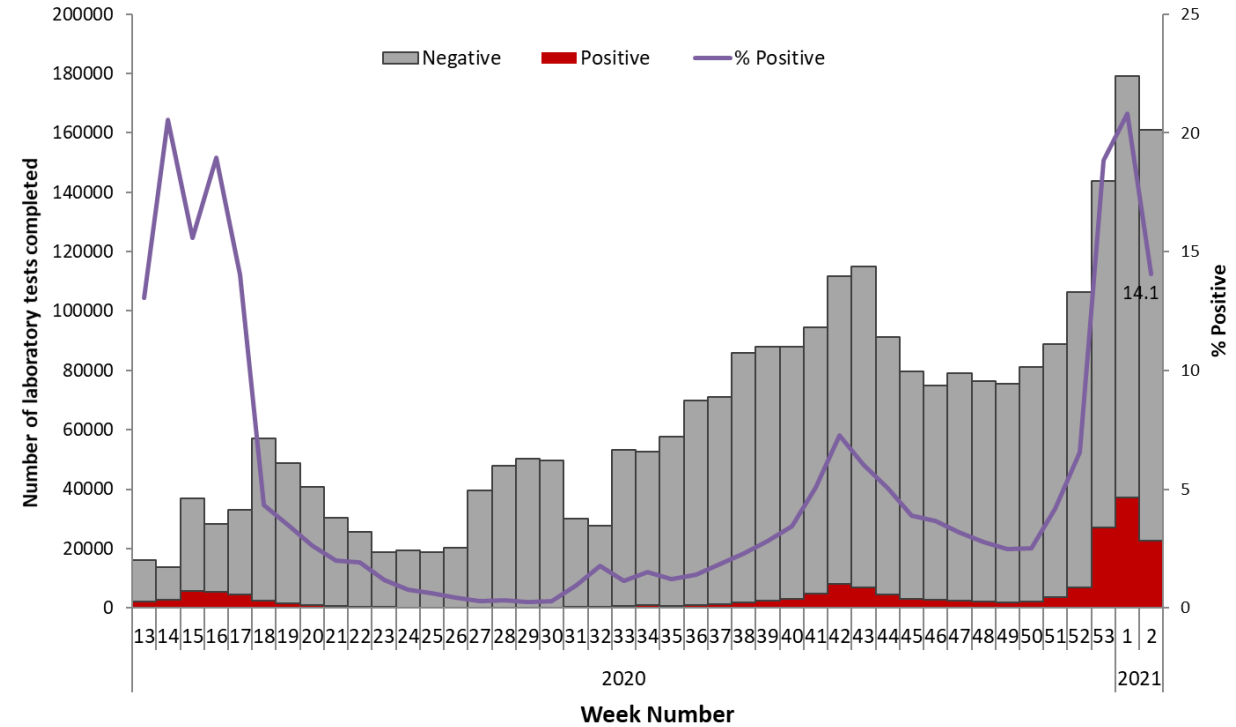
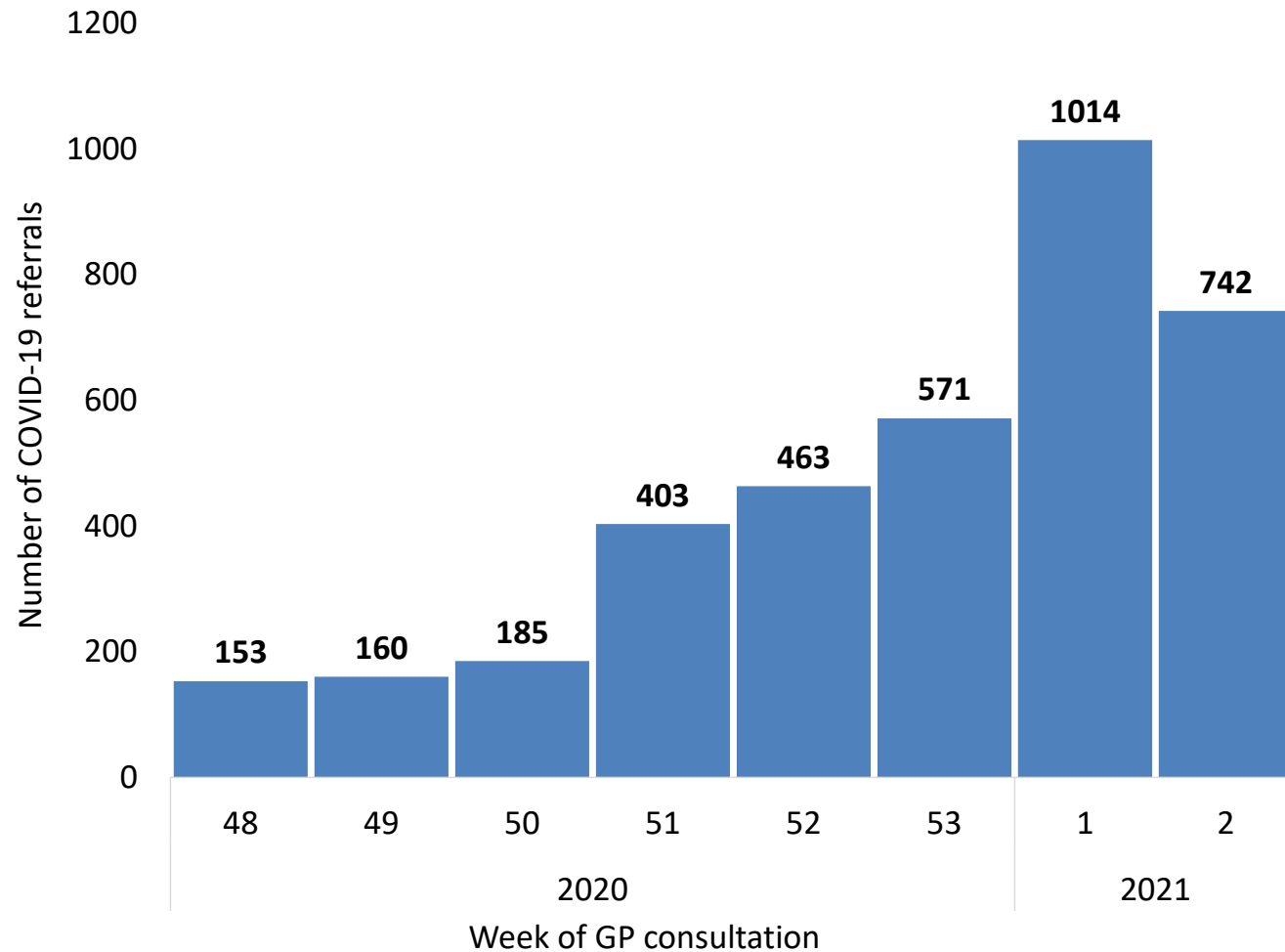


Figure 12b: Number of SARS-CoV-2 negative and positive tests* completed in Ireland between week 13, 2020 and week 2, 2021.

*positive test refers to all positive specimens and includes duplicates and individuals who were retested

Number of sentinel GP COVID-19 referrals by week of consultation



- The Irish Sentinel GP Surveillance Scheme is a collaboration between the Health Protection Surveillance Centre, the National Virus Reference Laboratory and the Irish College of General Practitioners.
- The sentinel GP network comprises 60 general practices and 166 practitioners, covering 6.6% of the national population (CSO Census 2016).

Figure 13a: Number of sentinel GP COVID-19 referrals between week 48 2020 and week 2 2021, Ireland. The epidemiological week used is from Monday to Sunday (ISO week) in line with influenza/COVID-19 international reporting to ECDC.

% SARS-CoV-2 positivity data from sentinel GP COVID-19 referrals tested by NVRL

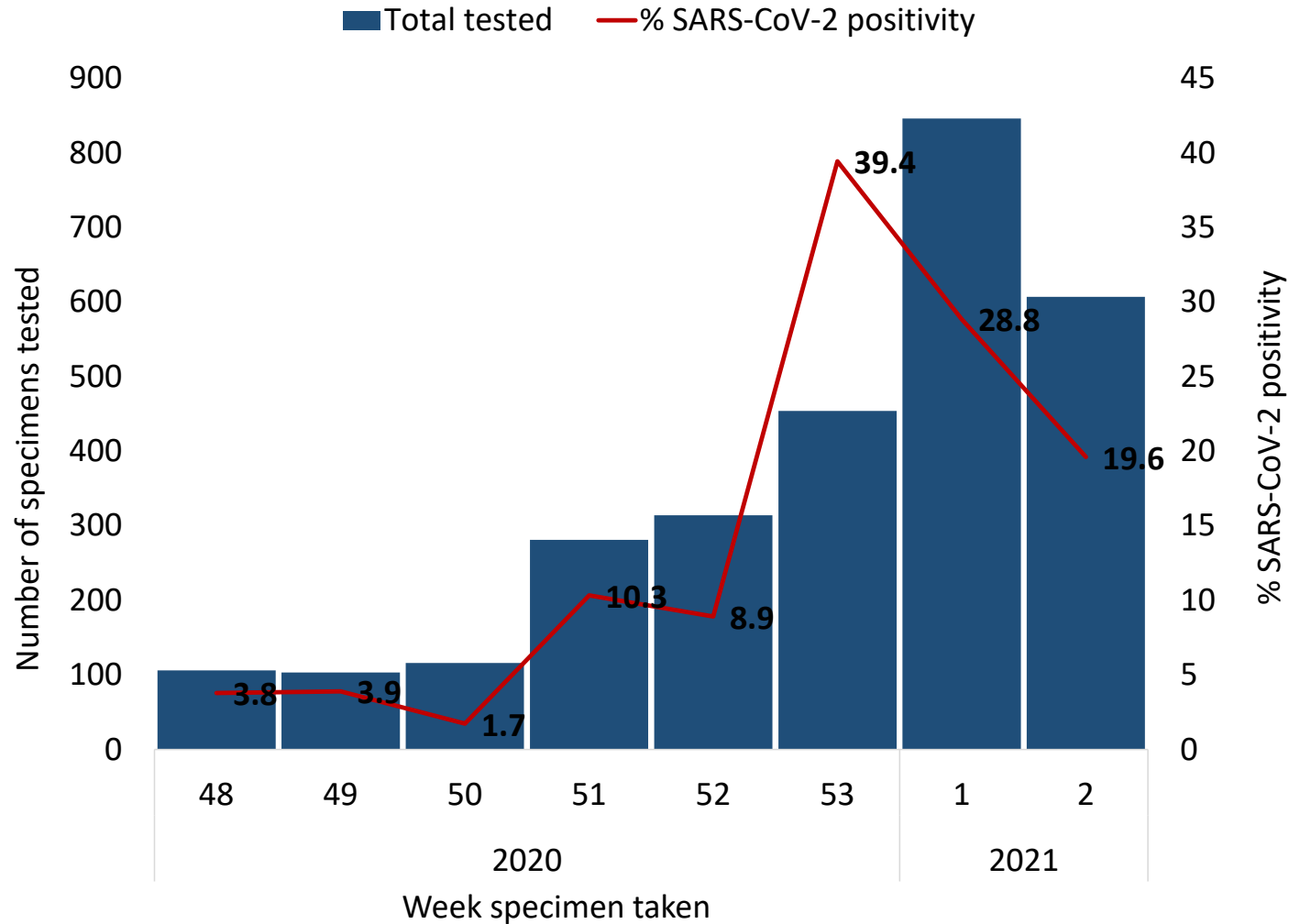


Figure 13b: % SARS-CoV-2 positivity data from sentinel GP COVID-19 referrals tested by the NVRL between week 48 2020 and week 2 2021. The Epidemiological week used is from Monday to Sunday (ISO week) in line with influenza/COVID-19 international reporting to ECDC.

Hospitalisations and ICU admissions among COVID-19 cases

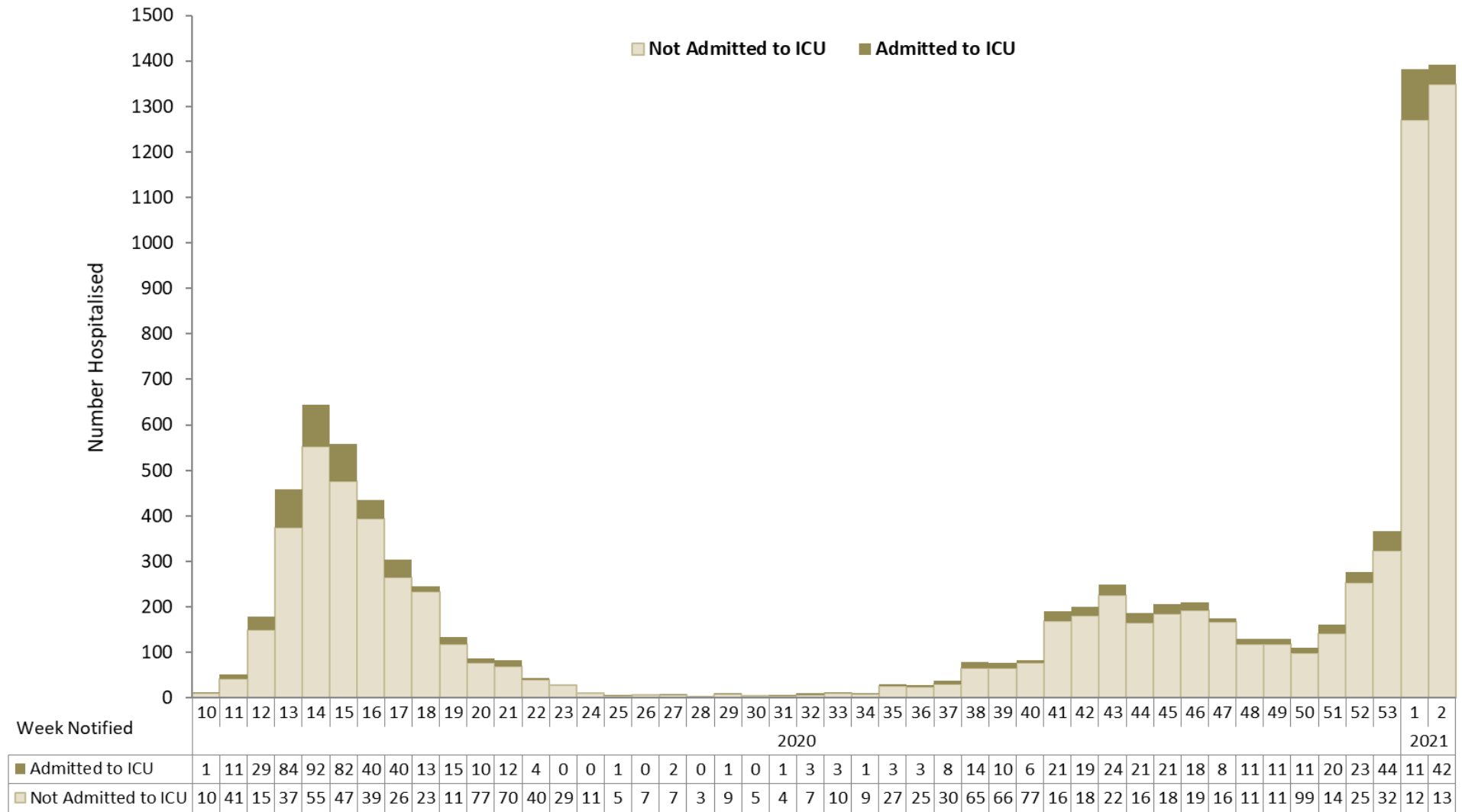


Figure 14: Number of hospitalised COVID-19 cases based on ICU admission status in Ireland between week 10, 2020 and week 2, 2021*

*Please note that the most recent weeks may not yet reflect all admissions.

Deaths among COVID-19 cases

	Number	Percent
Total number of deaths	2,616	
confirmed	2,352	89.9
probable	96	3.7
possible	168	6.4
Number hospitalised who died	1221	46.7
admitted to ICU who died	190	7.3
not admitted to ICU who died	1031	39.4
Number of imported cases who died	5	0.2
Number of HCWs who died	10	0.4
Number with underlying conditions who died	2,245	85.8
Males who died	1363	52.1
M:F ratio	1.09	
Median age (years)	83	
Mean age (years)	81	
Age range (years)	17 - 105	

Table 3: Summary of deaths in all COVID-19 cases notified in Ireland between week 10, 2020 and week 2, 2021.

Age group (years)	Female	Male	Total	Percent
<25	<5	<5	<5	0.1
25-34 yrs	<5	<5	7	0.3
35-44 yrs	6	8	14	0.5
45-54 yrs	16	29	45	1.7
55-64 yrs	38	79	117	4.5
65-74 yrs	138	259	397	15.2
75-84 yrs	392	504	896	34.3
85+ yrs	656	480	1136	43.4
Unknown	<5	<5	<5	0.1
Total	1253	1363	2616	100.0
Percent	47.9	52.1		

Table 4: Number of deaths in all COVID-19 cases by sex and age group notified in Ireland between week 10, 2020 and week 2, 2021.

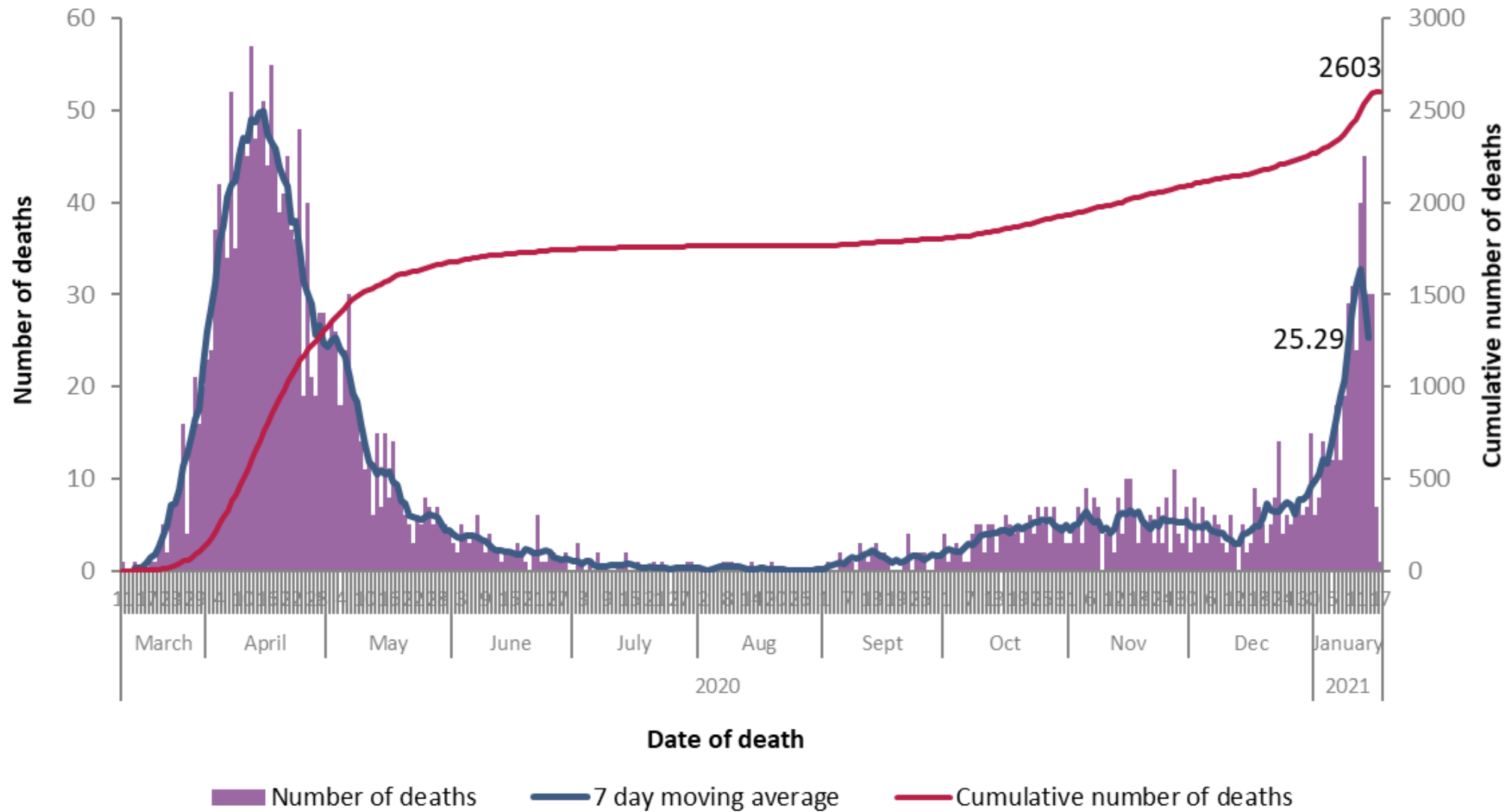


Figure 15a: Daily and 7-day moving average number of deaths among COVID-19 cases notified in Ireland by date of death and cumulative total between week 10, 2020 and week 2, 2021.

* Date of death is not yet available for thirteen cases

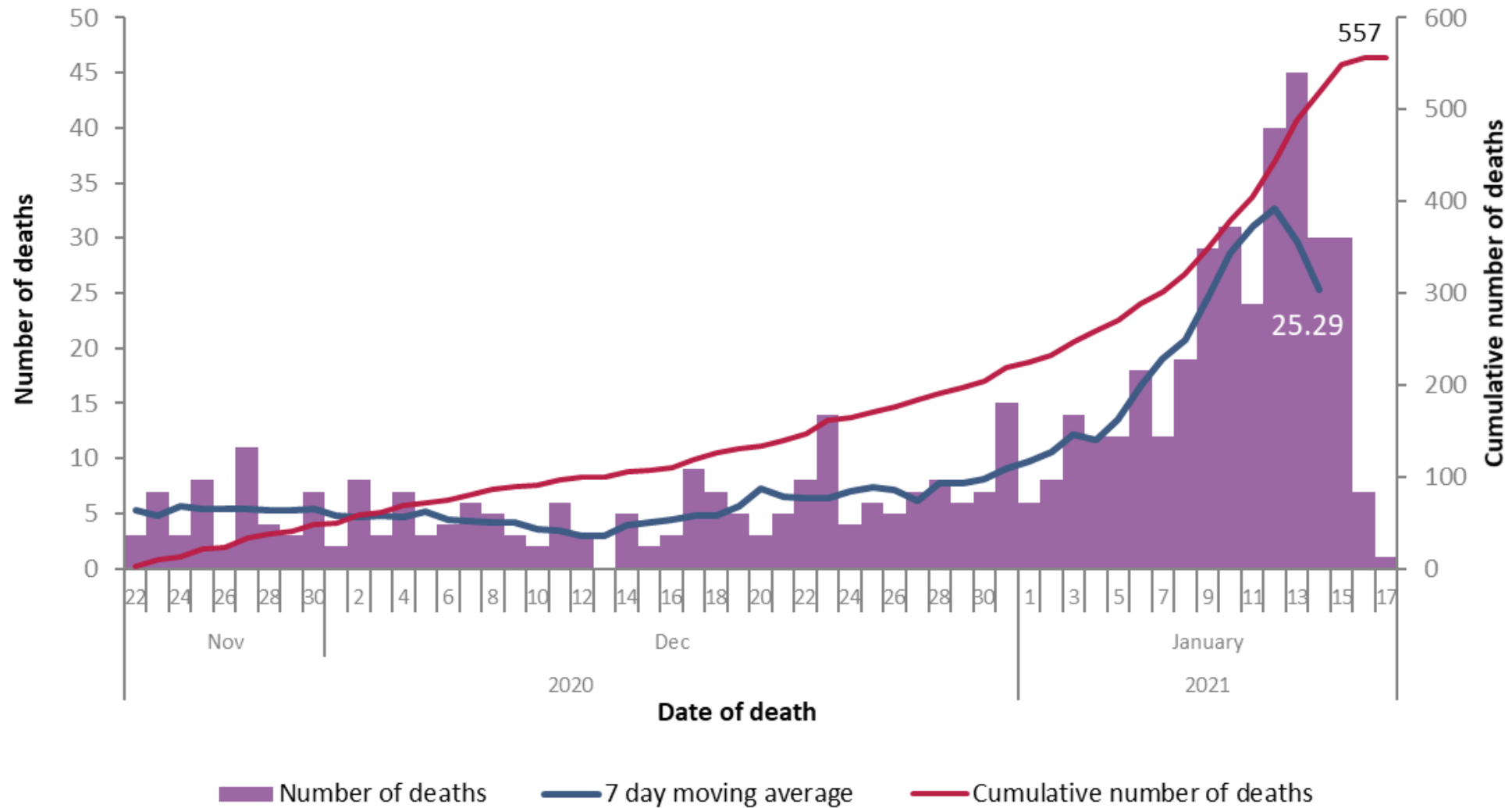


Figure 15b: Daily and 7-day moving average number of deaths among COVID-19 cases notified in Ireland by date of death and cumulative total, between week 48, 2020 and week 2, 2021.

Please note: a lag in time between reporting of deaths and data extraction is expected and as such most recent dates will not yet reflect all deaths on that date.

Please refer to the Health Protection Surveillance (HPSC) website for specific reports on

- [14 Day report](#) epidemiology of COVID-19 in Ireland
- [Outbreaks/clusters](#) in Ireland COVID-19 weekly report
- [Healthcare Workers](#) in Ireland COVID-19 weekly report

Acknowledgements

Sincere thanks are extended to all those who are participating in the collection of data and reporting of data used in these reports. This includes the HSE COVID-19 Contact Management Programme (CMP), staff in ICU units, notifying clinicians, laboratory staff, public health doctors, nurses, surveillance scientists, microbiologists and administrative staff.

Report prepared by COVID-19 Epidemiology Team, HPSC

Technical Notes

1. Data Source

- Data are based on statutory notifications and were extracted from Computerised Infectious Disease Reporting (CIDR) system. Data are provisional and subject to ongoing review, validation and update. As a result, figures in this report may differ from previously published figures.

2. Epidemiological date

- Epidemiological date is based on the earliest of dates available on the case and taken from date of onset of symptoms, date of diagnosis, laboratory specimen collection date, laboratory received date, laboratory reported date or event creation date/notification date on CIDR. By using this date rather than event creation/ notification date, adjusts for any delays in testing/notification.

3. Population data

- Population data were taken from Census 2016. Data were aggregated into the following age groups for the analysis: 0-4 years, 5-12 years, 13-18 years, 19-24 years, 25-34 years, 35-44 years, 45-54 years, 55-64 years, 65-74 years, 75-84 years and ≥ 85 years.

Appendix 1: Epidemiological weeks, start and end dates, 2021

- Note: Epidemiological week is from Sunday to Saturday in line with the [Infectious Disease Regulations 1981](#) and subsequent amendments

Year	Week	Start date	End date
2021	1	03/01/2021	09/01/2021
2021	2	10/01/2021	16/01/2021
2021	3	17/01/2021	23/01/2021
2021	4	24/01/2021	30/01/2021
2021	5	31/01/2021	06/02/2021
2021	6	07/02/2021	13/02/2021
2021	7	14/02/2021	20/02/2021
2021	8	21/02/2021	27/02/2021
2021	9	28/02/2021	06/03/2021
2021	10	07/03/2021	13/03/2021
2021	11	14/03/2021	20/03/2021
2021	12	21/03/2021	27/03/2021
2021	13	28/03/2021	03/04/2021
2021	14	04/04/2021	10/04/2021
2021	15	11/04/2021	17/04/2021
2021	16	18/04/2021	24/04/2021
2021	17	25/04/2021	01/05/2021
2021	18	02/05/2021	08/05/2021
2021	19	09/05/2021	15/05/2021
2021	20	16/05/2021	22/05/2021
2021	21	23/05/2021	29/05/2021
2021	22	30/05/2021	05/06/2021
2021	23	06/06/2021	12/06/2021
2021	24	13/06/2021	19/06/2021
2021	25	20/06/2021	26/06/2021
2021	26	27/06/2021	03/07/2021

Year	Week	Start date	End date
2021	27	04/07/2021	10/07/2021
2021	28	11/07/2021	17/07/2021
2021	29	18/07/2021	24/07/2021
2021	30	25/07/2021	31/07/2021
2021	31	01/08/2021	07/08/2021
2021	32	08/08/2021	14/08/2021
2021	33	15/08/2021	21/08/2021
2021	34	22/08/2021	28/08/2021
2021	35	29/08/2021	04/09/2021
2021	36	05/09/2021	11/09/2021
2021	37	12/09/2021	18/09/2021
2021	38	19/09/2021	25/09/2021
2021	39	26/09/2021	02/10/2021
2021	40	03/10/2021	09/10/2021
2021	41	10/10/2021	16/10/2021
2021	42	17/10/2021	23/10/2021
2021	43	24/10/2021	30/10/2021
2021	44	31/10/2021	06/11/2021
2021	45	07/11/2021	13/11/2021
2021	46	14/11/2021	20/11/2021
2021	47	21/11/2021	27/11/2021
2021	48	28/11/2021	04/12/2021
2021	49	05/12/2021	11/12/2021
2021	50	12/12/2021	18/12/2021
2021	51	19/12/2021	25/12/2021
2021	52	26/12/2021	01/01/2022